

Secure your care

Samsung Healthcare Cybersecurity

Bringing peace of mind to your hospital and patients

To address this emerging need for cybersecurity, Samsung provides a solution to support our customers by offering the tools to protect against cyberthreats that may compromise invaluable patient data and ultimately degrade the quality of care. Samsung's Cybersecurity Solution strives to abide by the CIA triad (Confidentiality, Integrity, and Availability) and takes a comprehensive approach to providing impeccable protection with the following pillars: Intrusion prevention, Access control, and Data protection.



Intrusion prevention

Tools for protecting against cyber threats from external attacks

- Security tools include Anti-virus & Firewall
- Secured operating system



Access control

Strengthened surveillance for tracking the access of patient information

- Account management
- Enhanced audit trail



Data protection

Encryption functions for safeguarding data whether at-rest or in-transit

- Data protection
- Transmission security

About Samsung Medison CO., LTD.

Samsung Medison, an affiliate of Samsung Electronics, is a global medical company founded in 1985. With a mission to bring health and well-being to people's lives, the company manufactures diagnostic ultrasound systems around the world across various medical fields. Samsung Medison has commercialized the Live 3D technology in 2001 and since being part of Samsung Electronics in 2011, it is integrating IT, image processing, semiconductor and communication technologies into ultrasound devices for efficient and confident diagnosis.

*This product, along with its various features, options and transducers, is not currently available in all countries.

Due to regulatory reasons, its future availability cannot be guaranteed. Please contact your local sales network for further details.

* This product is a medical device, please read the user manual carefully before use.

*S-Vue Transducer™ is the name of Samsung's advanced transducer technology.

*Beyond Experience™ is not the name of a function, but is Samsung's marketing terminology.

*Strain value for ElastoScan is not applicable in Canada and the United States.

* Optical Disk Drive is not available for this product.

SAMSUNG MEDISON CO., LTD.

© 2020 Samsung Medison All Rights Reserved.

Samsung Medison reserves the right to modify the design, packaging, specifications, and features shown herein, without prior notice or obligation.

CE 0123

Simple yet powerful

Ultrasound system

HS50 Powered by CrystalLive™



CT-HS50 V2.02-GH-FT-200113-EN

Scan code or visit
www.samsunghealthcare.com
to learn more



EXPERIENCE
A New Healthcare
Solution

SAMSUNG

Samsung's commitment to supporting confident decision making

Beyond Experience™, an integrated solution engineered to offer medical professionals a new and outstanding experience in diagnosis, delivers enriched views, advanced intelligence, and streamlined workflow. All of this combines to enable patient-centered care.

Samsung's HS50 ultrasound system has adopted this integrated solution in order to provide exquisite image quality and expert tools that enable you to focus on your specific needs.

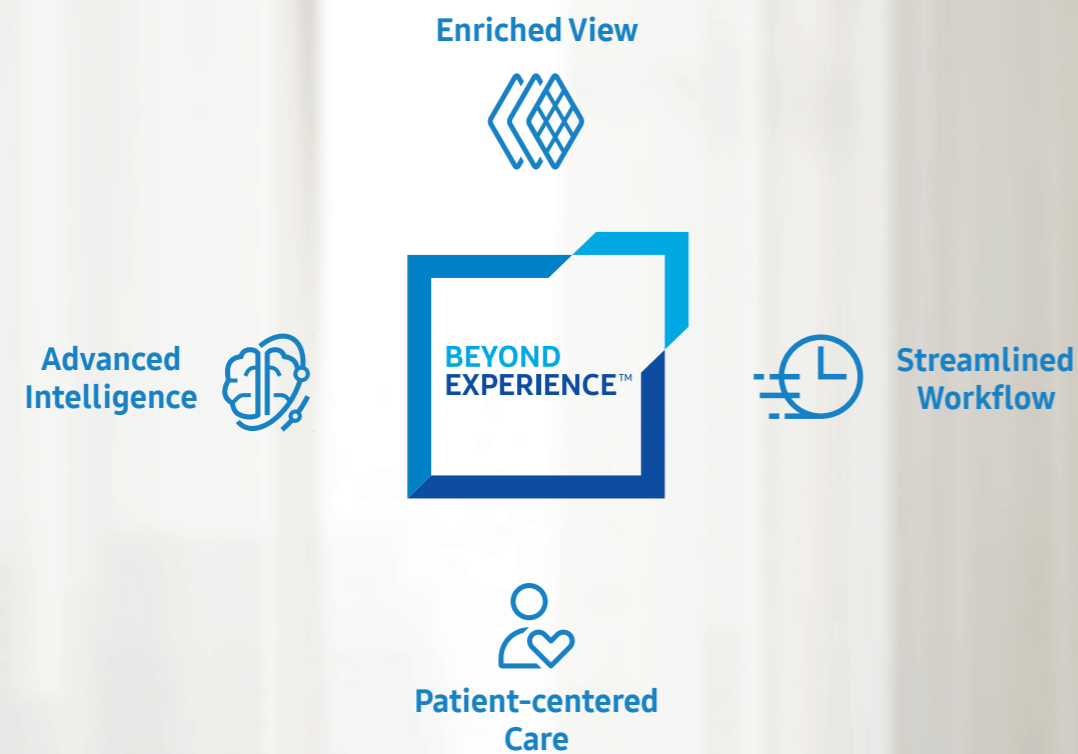


Powered by CrystalLive™

CrystalLive™ is Samsung's up-to-date ultrasound imaging engine with enhanced 2D image processing, 3D rendering and color signal processing, to offer outstanding image performance and efficient workflow during complex cases.



Samsung Ultrasound System **HS50**



More Valuable Information

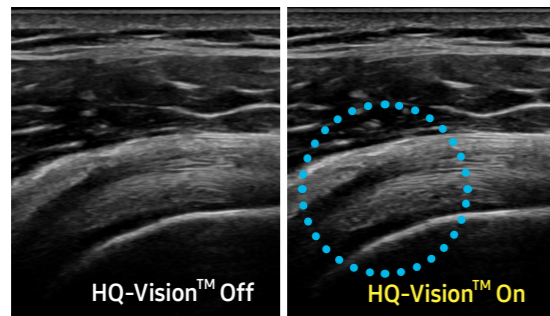
Samsung's advanced imaging technologies can provide new insights based on highly detailed images. This valuable information enables confident decision making.



For more valuable information

HQ-Vision™ ※

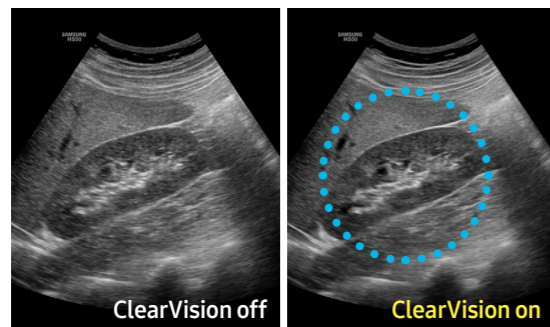
HQ-Vision™ provides clearer images by mitigating the characteristics of ultrasound images that are slightly blurred than the actual vision.



Shoulder

ClearVision

The noise reduction filter improves edge enhancement and creates sharper 2D images for optimal diagnostic performance. In addition, ClearVision provides application-specific optimization and advanced temporal resolution in live scan mode.



Kidney*

S-Flow™

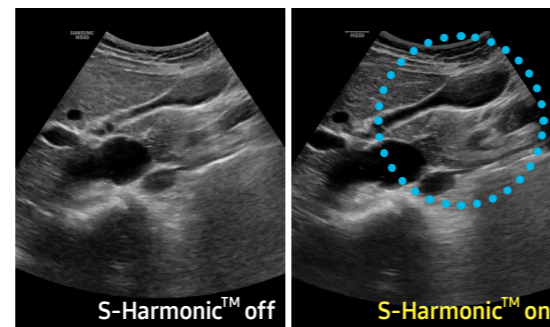
The function uses directional power doppler technology, enabling you to examine even the peripheral vessels. It displays information on the intensity and direction of blood flow. DPDI Mode: When it is selected, the PRF value is displayed on the color bar.



Liver with S-Flow™**

S-Harmonic™

S-Harmonic™ mitigates the signal noise, enhances contrast, and provides uniform image performance of overall image area from near-to-far.



Pancreas*

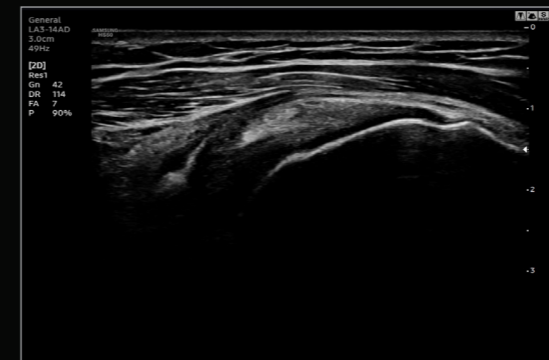
Image gallery



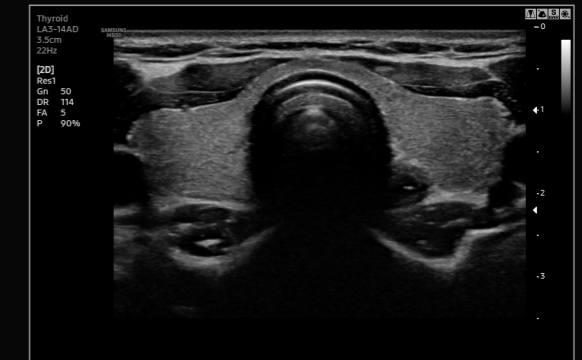
Liver*



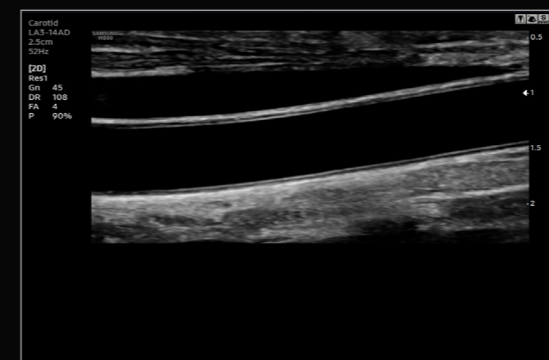
Pancreas*



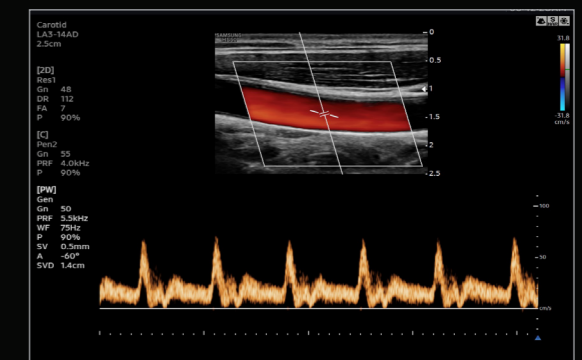
Shoulder*



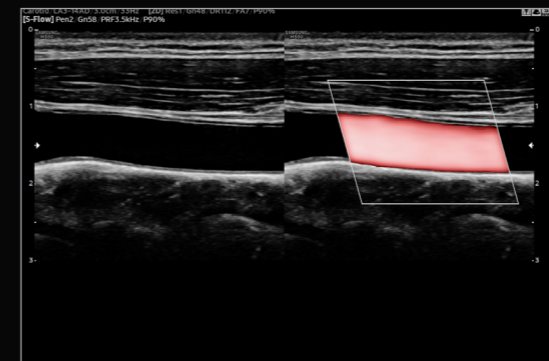
Thyroid*



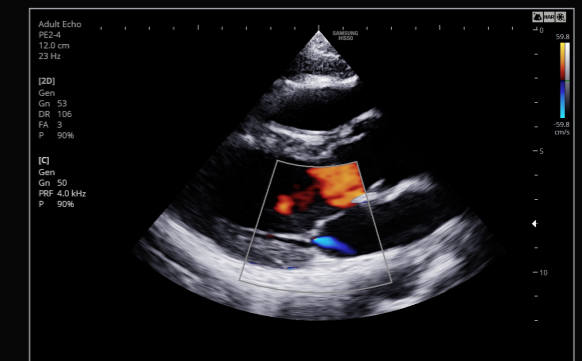
Carotid*



Carotid with color & PW*



Carotid with S-Flow™*



Parasternal long axis view with color*

Increased Consistency

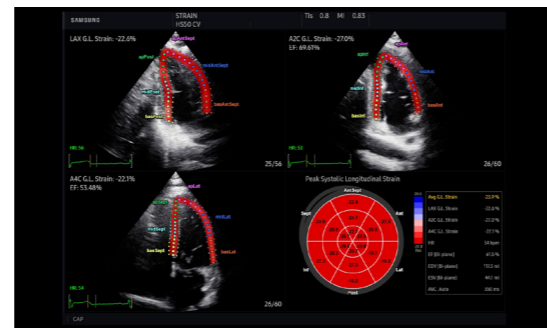
Thanks to its specially designed solutions, including an extensive range of quantification functions, the HS50 creates consistency to ensure accurate measurement.



For increased consistency

Strain+ *

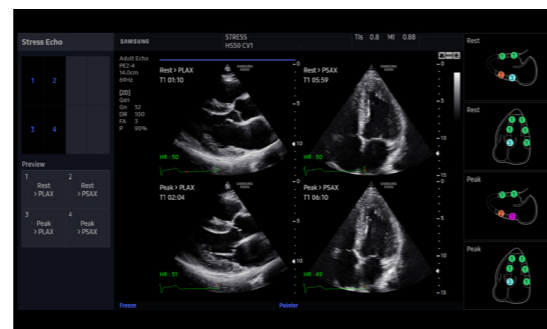
Strain+ is a quantitative tool for measuring global and segmental wall motion of the left ventricle (LV). In Strain+, three standard LV views and a Bull's Eye are displayed in a quad screen for easy and quick assessment of the LV function.



Adult echo*

StressEcho *

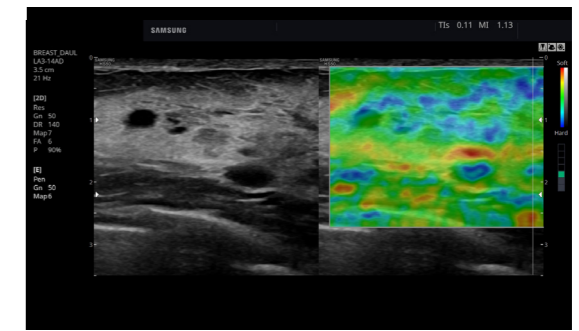
The StressEcho package includes wall motion scoring and reporting. It includes exercise StressEcho, pharmacologic StressEcho, diastolic StressEcho and free programmable StressEcho.



Adult echo*

ElastoScan™ *

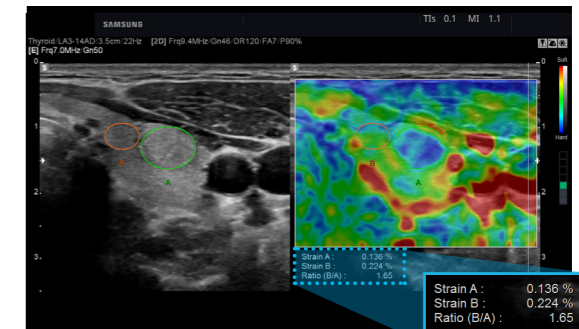
A diagnostic ultrasound technique for imaging elasticity, ElastoScan™ detects the presence of solid masses in tissues and converts any stiffness into color images.



Breast *

E-Strain™ *

E-Strain™ is designed to enable quick and easy calculation of the strain ratio between two regions of interest for day-to-day practice. Simply by setting the two targets, you can receive accurate, consistent results and make informed decisions in many types of diagnostic procedures.



Thyroid**

* Optional Extra

* The asterisk on this page is the clinical images acquired by the HS50 V1.00 ultrasound system

** Two asterisks on this page is the clinical images acquired by the HS50 V2.00 ultrasound system

Enhanced Efficiency

The HS50 has been designed to enhance efficiency through reducing keystrokes, enabling you to streamline your workflow by combining multiple actions into one. Its user-oriented design also enables you to focus on your patient, reducing the complexity and stress of operating the system.

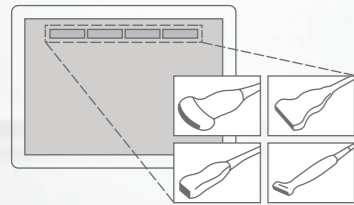


Streamlined Workflow

For enhanced efficiency

QuickPreset

With one touch, the user can select the most common transducer and preset combinations. QuickPreset increases efficiency to make a full day of scanning simple and easy.



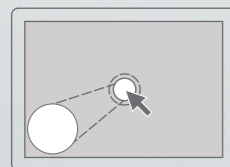
EzCompare™

EzCompare™ allows easy access to previously taken exams to evaluate corresponding views in a side-by-side display. For greater efficiency, EzCompare™ automatically matches the image settings, annotations, and bodymarkers from the prior study.



Measure Navigation

When placing a caliper, Measure Navigation automatically magnifies the area of interest using a picture-in-picture window to allow more precise placement of the calipers. This is especially useful when measuring small structures or when accuracy is critical.

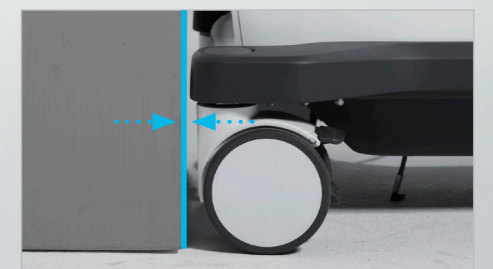


Gel warmer ※ Optional Extra
Two-level adjustable gel warmer maintains ultrasound gel at a comfortable temperature.

SSD **Solid State Drive (SSD)**
The HS50 uses advanced solid state drives. These stable and dependable drives allow faster bootup, better frame rates, and fast processing speeds.

BatteryAssist™
BatteryAssist™ provides the system with battery power. This serves two important purposes. It enables users to perform scans and transport the ultrasound system to other locations in environments where AC power may not be available temporarily.

Clever use of space
With its reduced weight and compact size, the HS50 takes up minimal space and can move freely. In addition, its streamlined rear profile allows you to park the HS50 in small spaces.



Comprehensive selection of transducers

Curved array transducers



S-Vue Transducer™

CA1-7AD

- Application : abdomen, obstetrics, gynecology



S-Vue Transducer™

CA2-9AD

- Application : abdomen, obstetrics, gynecology



CF4-9

- Application : pediatric, vascular

Endo-cavity transducers



EA2-11AV

- Application : obstetrics, gynecology, urology



EVN4-9

- Application : obstetrics, gynecology, urology



EA2-11AR

- Application : obstetrics, gynecology, urology



ER4-9

- Application : obstetrics, gynecology, urology

Volume transducers



S-Vue Transducer™

CV1-8AD

- Application : abdomen, obstetrics, gynecology



V5-9

- Application : obstetrics, gynecology, urology

Linear array transducers



LA3-14AD

- Application : small parts, vascular, musculoskeletal



LA3-16A

- Application : small parts, vascular, musculoskeletal

Phased array transducers



S-Vue Transducer™

PA1-5A

- Application : abdomen, cardiac, vascular



PE2-4

- Application : abdomen, cardiac, vascular



PA3-8B

- Application : abdomen, cardiac, pediatric



PA4-12B

- Application : cardiac, pediatric

CW transducers



CW6.0

- Application : cardiac



DP2B

- Application : cardiac

TEE transducer



MMPT3-7

- Application : cardiac

* Some of the transducers may not be available in some countries.